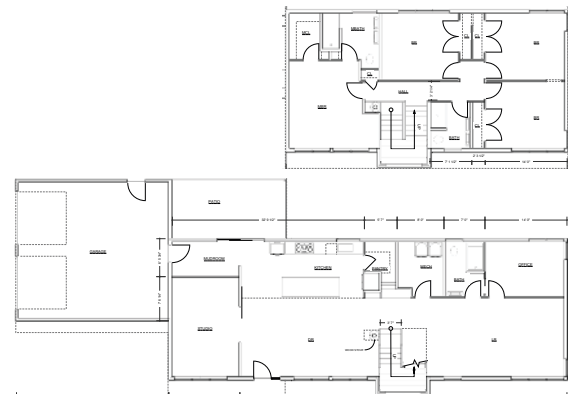




# Meadowview Contemporary

State College, PA



**Finished Area:** 2800 SF  
**HERS Score:** 50  
**Air Infiltration:** 0.79 ACH50  
**Features:** Passive solar, air-sealed building envelope, insulated wall sheathing with dense-pack cellulose R-25 insulation in walls and R-60 in attic, air-source heat pump, LED lighting, Projected Annual Energy Cost: \$1,700

The simple and efficient design of this contemporary passive solar home is balanced with an exploration in materials. The exterior is clad with both fiber cement siding and galvanized corrugated steel. The open plan is enhanced with modern materials: polished concrete floors, an architectural metal stair with laminated wood treads, bamboo floors, and artisan wood accent paneling.

High Performance Custom Homes  
 Architectural Design Services  
 Additions and Renovations

HVAC Installation and Service  
 Solar Design and Installation  
 Energy Audits

